


# The Effect of Tang Forte (Royal Jelly) Capsule on Hypoglycemia and Clinical Course in COVID-19 Patients Under Corticosteroid Therapy

Hamidreza Pourfard, MD<sup>1</sup>, Ali Ahmadi, PhD<sup>2</sup>,  
Zahra Habibi, MD<sup>3</sup>, Majid Asadi-Samani, PhD<sup>4</sup>,  
Najmeh Shahinfard, Msc<sup>3</sup>, and Akbar Soleimani, MD<sup>3</sup> 

## Abstract

Corticosteroids improve the complications of Covid-19 but may cause some side effects such as hyperglycemia. Royal jelly is one of the bee products that exert anti-inflammatory, insulin-like, and hypoglycemic activities. The present study was conducted to investigate the effect of royal jelly capsules on blood sugar and the clinical course of Covid-19 in the patients receiving corticosteroid therapy. In this clinical trial, 72 Covid-19 patients with positive reverse transcription polymerase chain reaction (RT-PCR) test and pulmonary involvement hospitalized in Shahrekord Hajar Hospital were enrolled and randomized into two groups: treatment (receiving corticosteroids and Royal Jelly 1000 mg capsules daily for 7 days) and placebo (given corticosteroids and placebo). Laboratory tests, blood sugar, and clinical courses were determined and compared. Data was analyzed using SPSS version 16. On day 7 after the onset of the intervention, the dosage and frequency of insulin, FBS level, and required corticosteroid showed a decrease in both groups but the inter-group difference was not significant ( $P > .05$ ). As well, the Spo2 level indicated a non-significant increase and hospital stay length indicated a non-significant decrease in the intervention group ( $P > .05$ ). Among the symptoms, only headache, cough, and dyspnea indicated an improvement in the intervention group ( $P < .05$ ). Overall, the results indicated the short-term consumption of royal jelly could not significantly improve blood sugar and the clinical course of Covid-19; however, it could significantly improve headache, cough, and dyspnea in the patients.

## Keywords

Covid-19, royal jelly capsule, methylprednisolone, diabetes, corticosteroid therapy

Received July 2, 2022. Received revised March 1, 2023. Accepted for publication March 4, 2023.

## Introduction

Covid-19 is known as a prevalent disease and one of the most prominent health issues worldwide.<sup>1</sup> As of November 4, 2021, Covid-19 affected approximately 247 million people worldwide, of whom 5 million died. Iran is one of the 10 most affected countries with over 6 million definite cases and around 120 000 deaths.<sup>2</sup> Although the majority of the cases are mild, in 20% of the patients, there are severe or critical symptoms that require hospitalization and intensive care.<sup>3</sup> Although Covid-19 mainly affects the respiratory system, many studies have found evidence of changes in hematologic, hepatic, and renal functions in hospitalized patients with Covid-19 infection, leading to the hypothesis that Covid-19

<sup>1</sup> Department of Internal Medicine, School of Medicine, Shahrekord University of Medical Sciences, Shahrekord, Iran

<sup>2</sup> Department of Epidemiology and Biostatistics, School of Health, Shahrekord University of Medical Sciences, Shahrekord, Iran

<sup>3</sup> Clinical Research Development Unit, Hajar Hospital, Shahrekord University of Medical Sciences, Shahrekord, Iran

<sup>4</sup> Cellular and Molecular Research Center, Basic Health Sciences Institute, Shahrekord University of Medical Sciences, Shahrekord, Iran

### Corresponding Author:

Akbar Soleimani, Department of Internal Medicine, School of Medicine, Shahrekord University of Medical Sciences, Shahrekord, Iran.  
Email: [a.soleimani@skums.ac.ir](mailto:a.soleimani@skums.ac.ir)



can cause damage to other organs and systems of the body through direct injury, drug toxicity or immune system-mediated response.<sup>4</sup> Early administration of steroids to Covid-19 patients has been reported to improve survival and reduce ICU length of stay.<sup>5</sup> However, a common side effect of corticosteroid therapy is hyperglycemia, which affects 20-50% of patients without a history of diabetes,<sup>6</sup> and hyperglycemia in patients with Covid-19 leads to worsened prognosis, and increases the risk of mechanical ventilation, shock, and multiple organ failure, which can negate the benefits of systemic corticosteroids. Therefore, blood sugar control is of special importance for these patients.<sup>7</sup>

Royal jelly is one of the most nutritious bee products and its constituents include water, protein, simple sugars (monosaccharides), omega fatty acids, minerals and vitamins.<sup>8</sup> Studies have shown the antiviral,<sup>9</sup> anti-inflammatory, insulin-like<sup>10</sup> and blood sugar-modulating<sup>11</sup> properties of royal jelly. According to the above-cited findings and arguments, the present study was conducted to investigate the effect of royal jelly capsules on blood pressure, laboratory parameters and critical course of Covid-19 in patients receiving corticosteroid therapy.

## Materials and Methods

The present study is a double-blind randomized clinical trial that was performed on patients with Covid-19 admitted to Hajar Hospital of Shahrekord in 2021. The sample size was calculated at 30 for each group based on similar studies and using the following formula. Finally, 36 people were enrolled to compensate for potential dropouts ( $1.96 = 1-\alpha/2$ ,  $1-\beta = 1.28$ ,  $S_1 = 0.4$ ,  $S_2 = 0.7$ ,  $D = 0.5$ ).<sup>12</sup>

$$\text{Sample size: } \frac{\left(Z_{1-\frac{\alpha}{2}} + Z_{1-\beta}\right)^2 (S_1^2 + S_2^2)}{d^2}$$

After receiving necessary explanations and providing informed consent to participate in the study, potential participants were enrolled based on inclusion criteria including age over 18 years, confirmed molecular test (positive polymerase chain reaction), SpO<sub>2</sub> 93%> in room air and pulmonary involvement in radiological examinations. Patients with diabetes, immune deficiency, acute bacterial infectious disease and allergies to bee products were excluded from the study.

Random allocation of participants to the control and intervention groups was performed using Random Allocation Software. Per the number of participants in the study, envelopes were prepared and the first envelope was labeled no. 1, the second envelope no. 2, etc, and in each envelope, the assignment of each patient was determined using the software. The assigned envelope was opened as soon as the participant entered, and according to the number in the envelope, the individual was assigned to one of the intervention or control groups (Figure 1).

The intervention group received corticosteroid therapy (methylprednisolone sodium succinate; 500 mg/8 ml diluents) and Tang Forte (Royal Jelly) 1000 mg Capsules daily for 7 days and the control group received corticosteroid therapy and placebo daily for 7 days.

Tang Forte (Royal Jelly) 1000 mg contains 350 mg royal jelly extract, 2 mg of vitamin E and other compounds as color, beeswax, soy lecithin, soybean.

It should be noted that the study was double-blind and the principal investigator and patients, as well as the statistician knew about the group assignment of the participants only by code.

A data collection form was completed for each patient separately. For all participants, demographic data such as age, gender and illness severity were recorded.

Liver function tests including aspartate aminotransferase (AST), alanine aminotransferase (ALT), alkaline phosphatase (ALKP or ALP), total and direct bilirubin, kidney functions including blood urea nitrogen (BUN), creatinine, sodium, and potassium, hematological factors including hemoglobin, white blood cell (WBC), platelets count (PLT), and fasting blood sugar (FBS) were examined before enrollment on a daily basis and inflammatory factors including lactate dehydrogenase (LDH) and ferritin were determined weekly before enrollment and clinical symptoms including headache, dyspnea, cough, fever, chills, sore throat, abdominal pain, diarrhea and respiration, and severity of the disease were determined on days 1 and 7.<sup>13</sup>

After data collection, the data were entered into SPSS software version 26 and analyzed using t-test, chi-square and repeated measures analysis of variance (ANOVA). The significance level (*P*-value) was considered <.05.

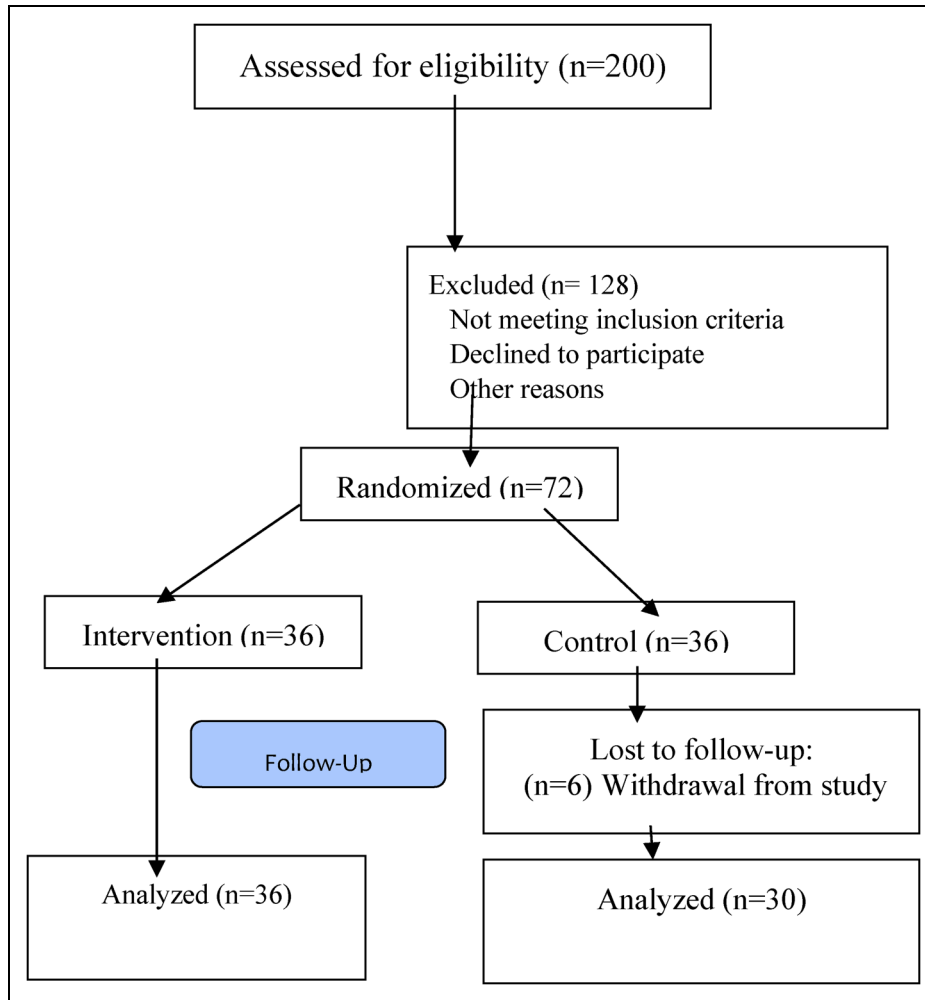
## Results

In the present study, 72 patients with Covid-19 were hospitalized and divided into two groups of 36 patients, of which 6 patients were excluded from the study. Finally, statistical analysis was performed on data from 30 patients in the control group and 36 patients in the intervention group (Figure 1).

The mean age in the intervention and control groups was  $43.97 \pm 14.92$  and  $45.96 \pm 13.01$  years, respectively. The gender distribution is presented in Table 1. The illness severity showed no difference between the two studied groups ( $P > .05$ ). Based on the results, all patients in two groups had moderate disease severity. After the treatment, the severity of the disease was mild in all patients and they were discharged (Table 1).

According to Table 2 and t-test results, the studied groups in the first to seventh days were not significantly different and were matched in terms of dosage and frequency of required corticosteroids and insulin ( $P > .05$ ). FBS on days 1-7 and oxygen saturation on days 1-6 were not significantly different between the two groups, but oxygen saturation on day 7 was significantly higher in the intervention group ( $P < .05$ ).

The studied groups in the first to seventh days were not significantly different in ALKP, BillIT, creatinine, WBC, hemoglobin and platelets ( $P > .05$ ). BillID on days 5 and 6 and BUN on days 2, 5 and 7 were significantly lower in the intervention group than in the control group ( $P < .05$ ) but on other days, no difference was observed between the two groups. AST on days 1-3 and ALT on day 1 was significantly higher in the intervention group than in the control group ( $P < .05$ ) but there was



**Figure 1.** Flowchart of the study.

**Table 1.** Some Demographic Properties of Patients Participated in This Study.

Characteristics	Intervention group (n = 36)	Control group (n = 30)	P value
Age (yr)	43.97 ± 14.92 (19-79)	45.96 ± 13.01 (15-79)	.59
Gender			.34
Male	15 (48.4%)	16 (51.6%)	
Female	21 (60%)	14 (40%)	
Severity of the disease			.89
Moderate	36 (100%)	30 (100%)	
Mild	0	0	

no difference between the two groups on other days (Table 3, Figure 2).

Repeated measures ANOVA showed that the studied variables significantly changed during the period ( $P > .001$ ) but the two groups were not significantly different in changes in SpO2 ( $P = .289$ ), FBS ( $P = .464$ ), AST ( $P = .131$ ), ALKP ( $P = .436$ ), BUN ( $P = .073$ ), PLT ( $P = .386$ ), creatinine

( $P = .880$ ), WBC ( $P = .387$ ) and Hb ( $P = .559$ ) (Table 3, Figure 2).

According to our results, the frequency distribution of disease severity, fever, chills, sore throat, abdominal pain, diarrhea and breathing before the intervention and on day 7 were not significantly different between the study groups ( $P > .05$ , Table 4).

Cough and dyspnea were significantly higher on the seventh day in the intervention group ( $P < .05$ ) but did not differ between the two groups on the first day. Headache on days 1 and 7 was significantly different between the two groups and were higher in the intervention group ( $P < .05$ ).

According to the results (Table 5), length of hospital stay was lower in the intervention group than in the control group ( $P > .05$ ). As well, ferritin and LDH on days 1 and 7 were not significantly different between the two groups ( $P > .05$ ).

## Discussion

In this study that was aimed to investigate the effect of royal jelly capsules on blood sugar and clinical course of Covid-19 in the

**Table 2.** Comparison of SpO<sub>2</sub>, FBS, Dosage and Frequency of Regular Insulin and Corticosteroids Required Between Studied Groups.

Variables	Day 1	Day 2	Day 3	Day 4	Day 5	Day 6	Day 7
Dosage of corticosteroid needed	Intervention Control	214.42 ± 48.75 215.67 ± 62.12	186.39 ± 69.45 203.67 ± 56.65	140.28 ± 83.58 128.00 ± 98.80	81.67 ± 98.14 48.33 ± 78.70	52.50 ± 90.43 22.67 ± 69.97	36.67 ± 72.11 22.67 ± 69.97
P value		.927	.279	.586	.131	.136	.429
Dosage of insulin needed	Intervention Control	0.39 ± 1.49 0.07 ± 0.36	1.56 ± 3.24 0.93 ± 2.21	1.47 ± 2.90 1.40 ± 2.78	1.06 ± 2.46 1.10 ± 2.17	0.58 ± 1.44 0.87 ± 1.25	0.33 ± 1.12 0.13 ± 0.50
P value		.376	.918	.941	.490	.685	.370
FBS (mg/dl)	Intervention Control	130.97 ± 69.9 115.67 ± 43.18	211.64 ± 121.66 195.63 ± 87.74	195.63 ± 95.07 193.97 ± 90.67	190.36 ± 96.72 176.73 ± 96.58	166.97 ± 76.72 154.90 ± 81.58	158.31 ± 85.11 142.60 ± 73.58
P value		.296	.550	.570	.538	.431	.545
SPO <sub>2</sub> (%)	Intervention Control	89.94 ± 5.52 89.37 ± 6.33	90.06 ± 5.18 89.43 ± 5.28	90.00 ± 5.84 89.53 ± 5.26	90.22 ± 5.22 90.17 ± 5.29	91.44 ± 5.68 90.77 ± 5.10	94.33 ± 6.67 89.33 ± 5.33
P value		.794	.632	.966	.615	.253	.002*

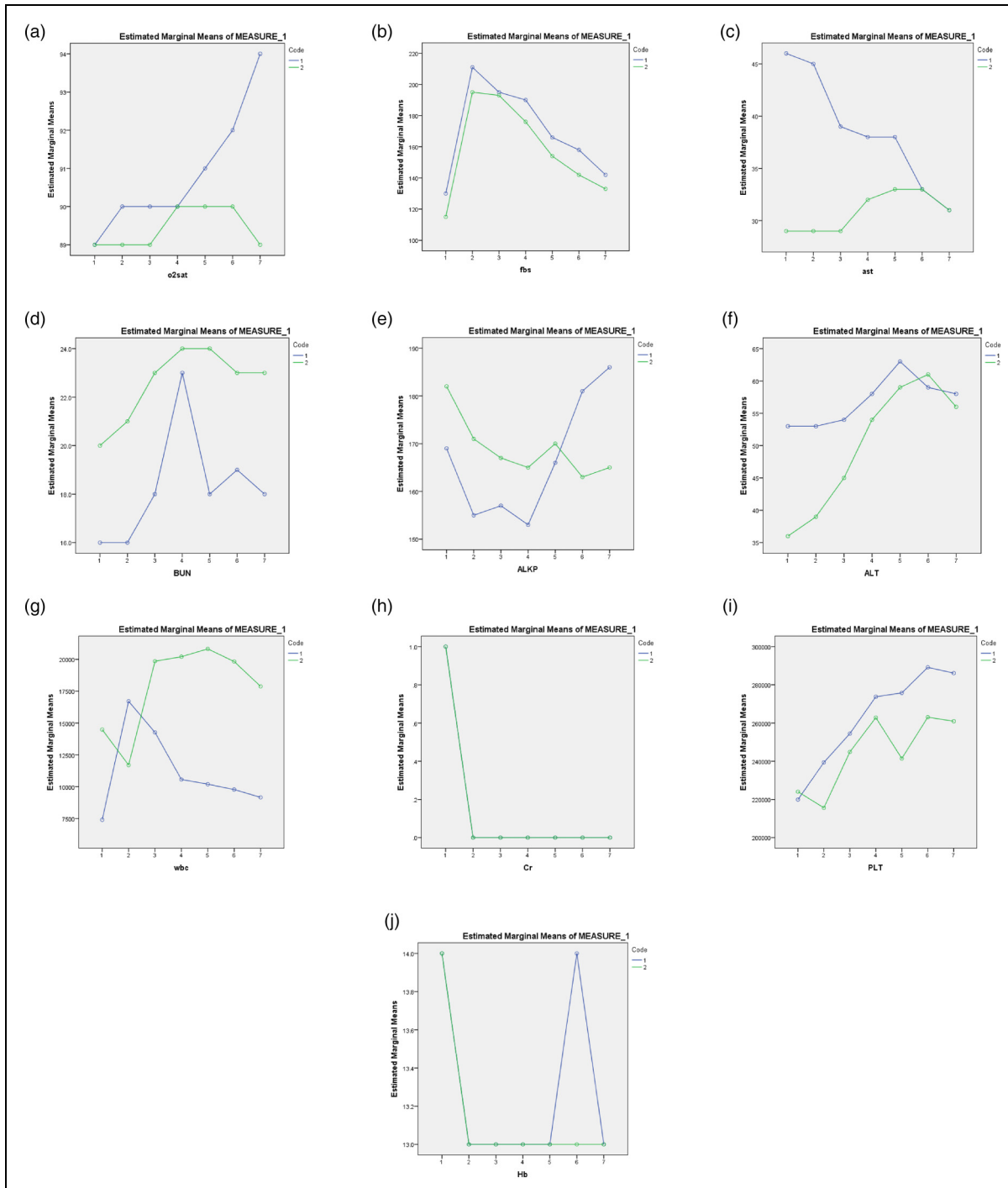
\* Significant difference ( $P < .05$ ), t-test

patients under corticosteroid therapy, the results indicated that the short-term use of royal jelly could not significantly improve blood sugar and clinical course of Covid-19; however, it could significantly improve the cough and dyspnea. The effectiveness of royal jelly on blood sugar parameters has been investigated in a number of studies. For example, in the study of Pourmoradian et al (2014) on type 2 diabetic women, the daily consumption of 1000 mg of royal jelly for 8 weeks significantly reduced HbA<sub>1c</sub> and FBS levels and significantly increased insulin concentration.<sup>14</sup> However, in the study of Shidfar et al on diabetic men and women, daily consumption of 1000 mg of royal jelly for 8 weeks did not have a significant effect on insulin, glucose and HOMA-IR.<sup>15</sup> In the study of Mobasseri et al (2015) on diabetic patients, consumption of 1000 mg royal jelly did not cause significant changes in FBS and insulin at 0, 60 and 120 min after consumption, indicating that royal jelly had no significant immediate effects on glycemic factors in patients with type 2 diabetes.<sup>16</sup> In the present study, in contrast to the study of Pourmoradian et al, but in line with the studies of Shidfar et al and Mobasseri et al, royal jelly did not have a significant effect on glycemic parameters. Inconsistent findings may be due to demographic differences (eg, gender), duration of treatment, etc In this regard, Omer et al (2019), in a systematic review of eighteen articles, reported that despite the positive effect of royal jelly on blood sugar regulation, the quality of evidence indicates that royal jelly reduces blood sugar activity in the long term and its effect is slight in the short term.<sup>11</sup> This confirms the present study's results with respect to the ineffectiveness of short-term use of royal jelly on blood glucose parameters. In addition, a meta-analysis by Mahboubi et al (2019) on 205 participants for FBS and 130 participants for HbA<sub>1c</sub> showed that royal jelly reduced FBS consumption by 0.95 mg/dl and HbA<sub>1c</sub> by 0.32, yet not statistically significantly. Therefore, it was argued that royal jelly supplement does not have a beneficial effect on glycemic indices. However, due to methodological constraints and confounding factors such as differing diets and populations, it was recommended that well-designed and controlled studies be conducted to examine the main confounding factors potentially involved.<sup>17</sup> In the systematic study of Maleki et al (2019), it was reported that out of twelve articles eligible for inclusion in analysis, only seven studies showed a significant reduction in FBS following the consumption of royal jelly.<sup>10</sup> Based on the above-mentioned and the findings of the present study, it seems that consumption of royal jelly for the short term does not have a significant effect on FBS and insulin consumption in Covid-19 patients; however, further studies are recommended due to the small sample size of the present study.

The results also showed that in the first to seventh days, ALKP and BillT were not significantly different between the two groups; however, BillD on days 5 and 7 was significantly lower in the intervention group than in the control group, but no difference was observed on other days. AST on days 1-3 and ALT on day 1 were significantly higher in the intervention group than in the control group, but on other days no difference between the two groups was noticed. Despite the higher mean AST and ALT levels in the intervention group, AST levels in

**Table 3.** Comparison of Hepatic, Renal and Hematological Functions Between Studied Groups.

Variables	Day 1	Day 2	Day 3	Day 4	Day 5	Day 6	Day 7
AST (U/l)	Intervention Control	45.89 ± 40.99 29.50 ± 10.57	39.14 ± 28.66 29.00 ± 8.55	38.03 ± 28.36 32.30 ± 11.05	38.03 ± 21.26 33.17 ± 15.23	33.29 ± 21.06 33.50 ± 14.20	31.86 ± 18.40 31.83 ± 12.11
P value		.026*	.050*	.302	.440	.927	.994
ALT (U/l)	Intervention Control	53.97 ± 43.76 39.53 ± 19.38	54.31 ± 42.09 45.00 ± 21.29	58.58 ± 41.39 54.03 ± 25.43	63.56 ± 52.66 59.70 ± 46.30	59.03 ± 60.86 61.37 ± 38.17	58.31 ± 56.74 57.00 ± 34.54
P value		.081	.251	.590	.753	.856	.913
ALKP (U/l)	Intervention Control	155.69 ± 46.91 171.13 ± 67.54	157.78 ± 59.62 167.73 ± 65.63	153.69 ± 55.65 165.27 ± 54.32	166.72 ± 66.33 170.33 ± 56.92	181.56 ± 91.50 163.20 ± 51.32	186.42 ± 120.3 165.17 ± 44.52
P value		.279	.521	.398	.815	.332	.363
BiliT (mg/dL)	Intervention Control	0.79 ± 0.86 0.62 ± 0.25	0.47 ± 0.26 0.48 ± 0.22	- -	0.54 ± 0.27 0.55 ± 0.23	0.61 ± 0.42 0.54 ± 0.23	0.62 ± 0.40 0.55 ± 0.23
P value		.316	.967	-	.885	.468	.426
BiliD (mg/dL)	Intervention Control	0.22 ± 0.11 0.29 ± 0.21	0.19 ± 0.13 0.22 ± 0.12	0.20 ± 0.15 0.24 ± 0.13	0.17 ± 0.08 0.24 ± 0.11	0.17 ± 0.09 0.23 ± 0.11	0.19 ± 0.11 0.25 ± 0.14
P value		.118	.321	.220	.007*	.026*	.052
BUJN (mg/dL)	Intervention Control	16.24 ± 6.92 20.02 ± 10.34	18.94 ± 5.94 23.40 ± 13.22	23.00 ± 19.35 24.21 ± 13.24	18.73 ± 5.38 24.06 ± 13.73	19.01 ± 5.40 23.08 ± 14.28	18.06 ± 5.34 23.54 ± 13.85
P value		.081	.074	.771	.036*	.118	.032*
Cr (mg/dL)	Intervention Control	1.12 ± 1.19 1.09 ± 0.74	0.97 ± 0.27 0.98 ± 0.25	0.98 ± 0.23 0.95 ± 0.21	0.91 ± 0.20 0.93 ± 0.20	0.88 ± 0.14 0.95 ± 0.21	0.90 ± 0.11 0.94 ± 0.20
P value		.890	.861	.663	.712	.144	.349
WBC (count)	Intervention Control	7405.6 ± 3837.4 14 483.3 ± 33 674.4	16 711.1 ± 33 674.4 19 856.9 ± 49 106.7	10 569.4 ± 2720.4 20 210.0 ± 53 910.0	10 197.2 ± 2858.1 20 823.3 ± 57 517.7	9778.3 ± 2801.4 19 830.0 ± 55 806.8	9161.5 ± 2485.6 17 880.0 ± 4862.5
P value		.269	.524	.336	.320	.332	.296
Hb (g/dl)	Intervention Control	14.20 ± 1.82 14.23 ± 1.95	13.56 ± 1.36 13.19 ± 1.65	13.60 ± 1.41 13.44 ± 1.54	13.85 ± 1.72 13.57 ± 1.64	14.17 ± 1.38 13.85 ± 1.74	13.90 ± 1.47 13.78 ± 1.66
P value		.926	.272	.658	.503	.417	.752
PLT (count)	Intervention Control	219 916.7 ± 73 432.7 224 033.3 ± 93 372.2	239 388.9 ± 88 920.9 215 606.7 ± 90 115.7	273 777.8 ± 106 512.3 262 833.3 ± 81 050.0	275 777.8 ± 110 374.7 241 426.7 ± 109 229.8	289 166.7 ± 113 214.5 263 066.7 ± 78 886.6	286 138.9 ± 91 924.2 260 933.3 ± 77 121.9
P value		.482	.286	.646	.210	.291	.238



**Figure 2.** Changes in oxygen saturation (a), FBS (b), AST (c), BUN (d), ALKP (e), ALT (f), WBC (g), Cr (h), PLT (i), HB (j) in studied groups (Code 1 = intervention; Code 2= Control).

the intervention group decreased by 15.11 units per liter but in the control group increased by 1.96 units per liter during the study period; ALT increased by 4.4 unit/l in the intervention group and by 20.3 unit/l in the control group, demonstrating the effectiveness of royal jelly for preventing ALT increase and AST decrease. However, the repeated measures ANOVA

results did not show a significant difference in any of the above parameters in the two groups. Animal studies have shown the effect of royal jelly on the reduction of liver enzymes in rats with streptozotocin- and carbon tetrachloride-induced hepatotoxicity.<sup>18,19</sup> In addition, in a clinical trial by Sargazi et al (2020) on addicts, it was observed that

**Table 4.** Comparison of Disease Severity and Symptoms During the Study in Studied Groups.

Variables		Pre-intervention			Day 7		
		Control Frequency (%)	Intervention Frequency (%)	P Value	Control Frequency (%)	Intervention Frequency (%)	P Value
Hospitalization and the need for mechanical ventilation	No	36 (100)	30 (100)	—	30 (100)	36 (100)	-
Hospitalization and the need for high-flow oxygenation	No	22 (61.1)	19 (63.3)	.528	28 (93.3)	35 (97.2)	.431
	Yes	—	—		2 (6.7)	1 (2.8)	
Hospitalization and the need for low-flow oxygenation	No	25 (69.4)	21 (70)	.650	28 (93.3)	35 (97.2)	.431
	Yes	11 (30.6)	9 (30)		2 (6.7)	1 (2.8)	
Hospitalization without the need for supportive oxygen but with the need for medical care	No	24 (66.7)	21 (70)	.492	23 (83.3)	30 (83.3)	.335
	Yes	12 (33.3)	9 (30)		7 (23.3)	6 (16.7)	
Hospitalization without the need for supportive oxygen and medical care	No	36 (100)	30 (100)	—	30 (100)	35 (97.2)	.545
	Yes	0 (0)	0 (0)		0 (0)	1 (2.8)	
Fever	No	10 (27.8)	10 (33.3)	.412	36 (100)	35 (100)	-
	Yes	26 (72.2)	20 (66.7)		0 (0)	0 (0)	
Chills	No	9 (25)	10 (33.3)	.318	29 (96.7)	36 (100)	.455
	Yes	27 (75)	20 (66.7)		1 (3.3)	0 (0)	
Cough	No	3 (8.3)	0 (0)	.156	7 (23.3)	35 (97.2)	<.001*
	Yes	33 (91.7)	30 (100)		23 (76.7)	1 (2.8)	
Sore throat	No	9 (25)	13 (43.3)	.095	28 (93.3)	36 (100)	.203
	Yes	27 (75)	17 (56.7)		2 (6.7)	0 (0)	
Dyspnea	No	6 (16.7)	2 (6.7)	.196	26 (86.7)	36 (100)	.038*
	Yes	30 (83.3)	28 (93.3)		4 (13.3)	0 (0)	
Abdominal pain	No	21 (58.3)	15 (50)	.334	29 (96.7)	36 (100)	.455
	Yes	15 (41.7)	15 (50)		1 (3.3)	0 (0)	
Diarrhea	No	25 (69.4)	17 (56.7)	.207	29 (96.7)	36 (100)	.455
	Yes	11 (30.6)	13 (43.3)		1 (3.3)	0 (0)	
Headache	No	18 (50)	8 (26.7)	.046*	13 (43.3)	33 (91.7)	<.001*
	Yes	18 (50)	22 (73.3)		17 (56.7)	3 (8.3)	
Pre-intervention breathing	Nasal	9 (25)	14 (46.7)	.272	1 (3.3)	0 (0)	.362
	Face mask	10 (27.8)	5 (16.7)		0 (0)	1 (2.8)	
	Reservoir bag mask	3 (8.3)	1 (3.3)		29 (96.7)	35 (97.2)	
	Spontaneous	14 (38.9)	10 (33.3)		1 (3.3)	0 (0)	

**Table 5.** Comparison of Ferritin, LDH and Length of Hospital Stay Between Studied Groups.

Variables		Groups		P value
		Control Mean ± SD	Intervention Mean ± SD	
Ferritin	Day 1	429.97 ± 601.04	416.60 ± 466.54	.921
	Day 7	417.86 ± 732.09	308.87 ± 339.86	
LDH	Day 1	578.64 ± 298.01	515.20 ± 190.86	.456
	Day 7	410.92 ± 216.20	444.70 ± 145.28	.255
Length of hospital stay		5.22 ± 1.60	4.00 ± 1.68	.469

consumption of royal jelly for 8 weeks significantly reduced liver enzymes AST and ALKP compared to the control group.<sup>20</sup> Another study by Basirat Dehkordi et al (2019) on multiple sclerosis patients showed that taking royal jelly for 6 weeks significantly reduced ALT and ALKP compared to the control group.<sup>21</sup> In the present study, in line with the above-

cited studies, royal jelly prevented the increase of ALT and the decrease of AST, although the changes in analysis of variance were not significant, which is probably due to the short treatment period, small sample size and lack of matching of groups in terms of AST and ALT prior to the intervention; therefore, further studies with higher doses and larger sample size are recommended.

The results of the present study also showed that royal jelly had no significant effect on renal and hematological factors, although the mean BUN levels on days 2, 5 and 7 were significantly lower in the intervention group than in the control group. However, the repeated measures ANOVA did not show a significant difference in any of the renal and hematological parameters between the two groups. Animal studies have shown the protective effects of royal jelly against kidney damage and toxicity induced by diabetes,<sup>22</sup> cisplatin,<sup>23</sup> ischemia-blood transfusion<sup>24</sup> and doxorubicin.<sup>25</sup> However, human studies evidence on its effectiveness is limited and contradictory. In a study of swimmers, royal jelly was found to be ineffective during a 30-day exercise program and increased BUN and creatinine

levels due to its high amino acid content.<sup>26</sup> However, a study on cancer patients treated with cisplatin and receiving royal jelly three times before and during chemotherapy showed no significant effect on creatinine and BUN,<sup>27</sup> which is consistent with our study. However, the difference in the results could be due to certain variables such as demographic differences and treatment period.

The results of the present study also revealed that the studied groups did not differ significantly in WBC, ferritin and ldhy on days 1-7. The repeated measures ANOVA results did not show a significant difference in the mean values of WBC, ferritin and LDH between the intervention and control groups. A number of studies have examined the anti-inflammatory effects of jelly royal. A study by Aslan et al (2015) showed that royal jelly significantly reduced the levels of the pro-inflammatory cytokines tumor necrosis factor alpha (TNF- $\alpha$ ), Interleukin (IL)-1 $\beta$  and IL-18 in the blood and kidney tissue samples of ethylene glycol-receiving mice.<sup>28</sup> In one animal study, royal jelly reduced peripheral blood leukocytes and pneumonia in asthmatic mice.<sup>29</sup> In addition, a clinical trial in obese individuals showed that royal jelly consumption for 8 weeks significantly reduced the inflammatory marker C-reactive protein and significantly increased the anti-inflammatory marker adiponectin compared to the placebo.<sup>30</sup> In contrast to the above-cited studies, royal jelly did not produce a significant effect on inflammatory factors, which is probably due to demographic differences, short treatment period and small sample size, and further studies are thus recommended to examine this finding.

Our results also showed that oxygen saturation on days 1-6 was not significantly different between the two groups, but the variable on day 7 was significantly higher in the intervention group. However, the repeated measures ANOVA results did not show a significant difference in mean oxygen saturation between the two groups. The results of the present study also showed that the severity of the disease and clinical symptoms such as fever, chills, sore throat, abdominal pain, diarrhea and breathing before the intervention and on day 7 were not significantly different between the studied groups. However, cough and dyspnea on the seventh day were significantly lower in the intervention group than in the control group. Although headache on days 1 and 7 in the control group was significantly higher and the groups were not matched before the intervention, its reduction was higher in the intervention group (41.7%) than in the control group (16.6%). Besides this, our results showed that the studied groups had a non-significant difference in length of hospital stay so that the length was non-significantly higher in the intervention group than in the control group, which indicates the ineffectiveness of royal jelly for reducing the severity of the disease and length of hospital stay.

Although some studies on animal models and some *in vitro* studies have shown the antiviral effect of royal jelly,<sup>31,32</sup> its effectiveness on improving patient outcomes in viral diseases has not yet been investigated. In the present study, for the first time, this effect was evaluated in patients with Covid-19 and no significant improvement of patient outcomes was observed, although this could be due to the low dose of royal

jelly, short treatment period and/or small sample size. Further studies are recommended to reach more definitive observations.

One of the limitations of our study was lack of matching of groups in terms of ALT and AST and day 1 headache, which could not be matched, but we compared the trend of changes between the two groups during the period using repeated measures ANOVA, yielding no significant difference in AST and ALT between the two groups during the period.

## Conclusion

Our results showed that administration of royal jelly for seven days had no significant effect on blood sugar, dosage and frequency of insulin and corticosteroid, liver and kidney function indices, inflammatory markers, hemoglobin, platelets, disease severity, and most clinical symptoms. However, it could significantly improve some symptoms such as cough and dyspnea after treatment. Future studies can address the use of the royal jelly during the treatment of Covid-19 for the long term to potentially improve most of the symptoms due to this disease.

## Acknowledgements

The authors would like to thank the Clinical Research Development Unit, Hajar Hospital, Shahrekord University of Medical Sciences, Shahrekord, Iran for their support, cooperation and assistance throughout the period of study.

## Author Contributions

ZH, MAS, and AS designed the study. HP and NS collected the data. AA performed data analysis and interpretation. All authors drafted the manuscript and approved the final version.

## Declaration of Conflicting Interests

The author(s) declared no potential conflicts of interest with respect to the research, authorship, and/or publication of this article.

## Ethical Approval

The protocol of this study was reviewed and approved by the Ethics Committee of Shahrekord University of Medical Sciences (IR.SKUMS.REC.1400.063). IRCT registration number for this study is IRCT20210616051596N1.

## Funding

The study was funded by Deputy of Research and Technology, Shahrekord University of Medical Sciences, Shahrekord, Iran (Grant number: 5842)

## ORCID iD

Akbar Soleimani  <https://orcid.org/0000-0002-0763-6285>

## References

1. Farnoosh G, Alishiri G, Zijoud SRH, Dorostkar R, Farahani AJ. Understanding the 2019-novel coronavirus (2019-nCoV) and coronavirus disease (COVID-19) based on available evidence-a narrative review. *J Militar Med.* 2020;22(1):1-11.



2. Cascella M, Rajnik M, Aleem A, Dulebohn S, Di Napoli R. Features, evaluation, and treatment of coronavirus (COVID-19). *Stat Pearls*. 2021;2(1):22-29.
3. Ung COL. Community pharmacist in public health emergencies: Quick to action against the coronavirus 2019-nCoV outbreak. *Res Social Adm Pharm*. 2020;2(1):22-29.
4. Sharma A, Jaiswal P, Kerakhan Y, et al. Liver disease and outcomes among COVID-19 hospitalized patients—a systematic review and meta-analysis. *Ann Hepatol*. 2021;21(2):1002-1073.
5. Recovery Collaborative Group. Dexamethasone in hospitalized patients with COVID-19—preliminary report. *NEJM*. 2020;1(22):3-4.
6. Clore J, Thurby-Hay L. Glucocorticoid-induced hyperglycemia. *Endoc Prac*. 2009;15(5):469-474.
7. Sardu C, D'Onofrio N, Balestrieri ML, et al. Outcomes in patients with hyperglycemia affected by COVID-19: Can we do more on glycemic control? *Diabetes Care*. 2020;43(7):1408-1415.
8. Maroof K, Gan SH. Chapter 3 - Bee products and diabetes mellitus. In: Boyacioglu D, ed. *Bee products and their applications in the food and pharmaceutical industries*. Academic Press; 2022:63-114.
9. Naghib M, Kariminik A, Arababadi MK, Rokhbakhsh-Zamin F. The effects of royal jelly on the pro-inflammatory innate immunity cytokines in patients infected with hepatitis b virus and its antiviral activity. *Journal of Applied Biotechnology Reports*. 2022;9(2): 640-644.
10. Maleki V, Jafari-Vayghan H, Saleh-Ghadimi S, Adibian M, Kheirouri S, Alizadeh M. Effects of Royal jelly on metabolic variables in diabetes mellitus: A systematic review. *Complement Ther Med*. 2019 Apr;43:20-27. doi: 10.1016/j.ctim.2018.12.022
11. Omer K, Gelkopf MJ, Newton G. Effectiveness of royal jelly supplementation in glycemic regulation: A systematic review. *World J Diabetes*. 2019;10(2):96-108.
12. Suresh KP, Chandrashekhara S. Sample size estimation and power analysis for clinical research studies. *J Hum Reprod Sci*. 2012;5(1):7-13.
13. Spinner CD, Gottlieb RL, Criner GJ, et al. Effect of remdesivir vs standard care on clinical status at 11 days in patients with moderate COVID-19: A randomized clinical trial. *Jama*. 2020;324(11): 1048-1057.
14. Pourmoradian S, Mahdavi R, Mobasseri M, Faramarzi E, Mobasseri M. Effects of royal jelly supplementation on glycemic control and oxidative stress factors in type 2 diabetic female: A randomized clinical trial. *Chinese J Integr Med*. 2014;20(5): 347-352.
15. Shidfar F, Jazayeri S, Mousavi SN, Malek M, fateme HOSSEINI A, Khoshpey B. Does supplementation with royal jelly improve oxidative stress and insulin resistance in type 2 diabetic patients? *Iranian J Public Health*. 2015;44(6):797-812.
16. Mobasseri M, Ghiyasvand S, Ostadrahimi A, Ghojzadeh M, Noshad H, Pourmoradian S. Effect of fresh royal jelly ingestion on glycemic response in patients with type 2 diabetes. *Iran Red Crescent Med J*. 2015;17(9):44-56.
17. Mahboobi S, Jafarnejad S, Eftekhari MH. Royal jelly does not improve markers of glycemia: A systematic review and meta-analysis of randomized clinical trials. *Complement Ther Med*. 2019;44(2):235-241.
18. Ghanbari E, Nejati V, Khazaei M. Improvement in serum biochemical alterations and oxidative stress of liver and pancreas following use of royal jelly in streptozotocin-induced diabetic rats. *Cell J*. 2016;18(3):362-377.
19. Cemek M, Aymelek F, Büyükkuroğlu ME, Karaca T, Büyükben A, Yılmaz F. Protective potential of royal jelly against carbon tetrachloride induced-toxicity and changes in the serum sialic acid levels. *Food Chem Toxicol*. 2010 Oct;48(10):2827-2832. doi: 10.1016/j.fct.2010.07.013
20. Sargazi M, Taghian F. The effect of royal jelly and exercise on liver enzymes in addicts. *Arch Pharmac Pract*. 2020;11(2): 55-66.
21. Basirat-Dehkordi S, Vahidian-Rezazadeh M, Moghtaderi A. Response of aspartate aminotransferase, alanine aminotransferase, and alkaline phosphatase enzymes to aerobic exercise and royal jelly in multiple sclerosis patients. *KAUMS J*. 2019;23(4):352-360.
22. Ghanbari E, Nejati V, Azadbakht M. Protective effect of royal jelly against renal damage in streptozotocin induced diabetic rats. *Bimonth Iranian J Toxicol*. 2015;2(1):55-67.
23. Silici S, Ekmekcioglu O, Kanbur M, Deniz K. The protective effect of royal jelly against cisplatin-induced renal oxidative stress in rats. *World J Urol*. 2011;29(1):127-132.
24. Salahshoor MR, Jalili C, Roshankhah S. Can royal jelly protect against renal ischemia/reperfusion injury in rats? *Chinese J Physiol*. 2019;62(3):131-144.
25. Salahshoor MR, Jalili C, Roshankhah S. Can royal jelly protect against renal ischemia/reperfusion injury in rats? *Chin J Physiol*. 2019;62(3):131.
26. Saritas N, Yildiz K, Büyükipekci S, Coskun B. Effect of different levels of royal jelly on biochemical parameters of swimmers. *African J Biotechnol*. 2011;10(52):10718-10723.
27. Osama H, Abdullah A, Gamal B, et al. Effect of honey and royal jelly against cisplatin-induced nephrotoxicity in patients with cancer. *J Am College Nutr*. 2017;36(5):342-346.
28. Aslan Z, Aksoy L. Anti-inflammatory effects of royal jelly on ethylene glycol induced renal inflammation in rats. *Int Braz J Urol*. 2015;41(5):1008-1013.
29. El-Aidy WK, Ebeid AA, Sallam AE-RM, et al. Evaluation of propolis, honey, and royal jelly in amelioration of peripheral blood leukocytes and lung inflammation in mouse conalbumin-induced asthma model. *Saudi J Biol Sci*. 2015;22(6):780-788.
30. Petelin A, Kenig S, Kopinč R, Deželak M, Černelič Bizjak M, Jenko Pražnikar Z. Effects of royal jelly administration on lipid profile, satiety, inflammation, and antioxidant capacity in asymptomatic overweight adults. *Evid Based Complement Alternat Med*. 2019;55(3):67-77.
31. Habashy NH, Abu-Serie MM. The potential antiviral effect of major royal jelly protein2 and its isoform X1 against severe acute respiratory syndrome coronavirus 2 (SARS-CoV-2): Insight on their sialidase activity and molecular docking. *J Funct Foods*. 2020;75(2):1042-1082.
32. Hashemipour MA, Tavakolineghad Z, Arabzadeh S, Iranmanesh Z, Nassab S. Antiviral activities of Honey, Royal Jelly, and Acyclovir against HSV-1. *Wounds: A Compendium of Clinical Research and Practice*. 2014;26(2):47-54.